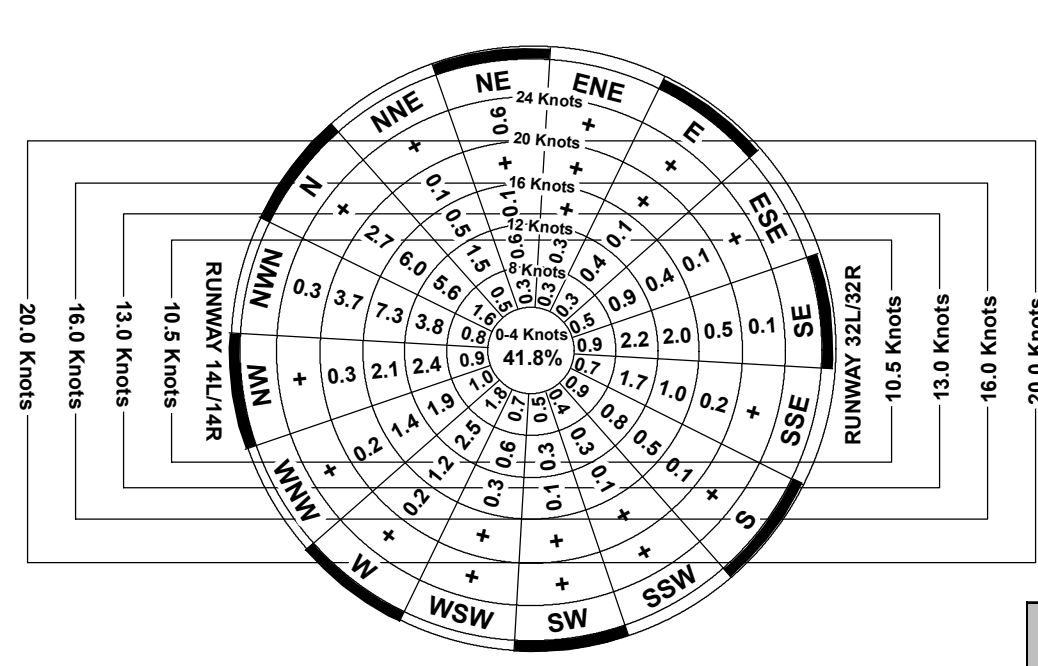


MOFFETT FEDERAL AIRFIELD Buildings		
Building No.	Building Name	Building Use
007	HANGAR ONE	Aircraft
027	SMALL ARMS/PYROTECHNICS MAGAZINE	Mothballed
028	SMALL ARMS/PYROTECHNICS MAGAZINE	Unused
032	NORTH FLOODLIGHT TOWER	Unused
033	SOUTH FLOODLIGHT TOWER	Storage
044	STORAGE FACILITY	Mothballed
045	STORAGE FACILITY	Maintenance
045A	WESTERN SIDE AQUIFER TREATMENT SYSTEM	Office
046	AIRCRAFT MAINTENANCE HANGAR 2	Aircraft
047	AIRCRAFT MAINTENANCE HANGAR 3	Out Grant
055	BOLER HOUSE HANGARS 2 & 3	Maintenance
056	SAFARIAN SHELTER/FILM STATION	Maintenance
059	INERT AMMUNITION STORAGE	Mothballed
070	FUSE & DETONATOR MAGAZINE	Out Grant
071	HIGH EXPLOSIVE MAGAZINE	Out Grant
072	HIGH EXPLOSIVE MAGAZINE	Out Grant
073	HIGH EXPLOSIVE MAGAZINE	Out Grant
074	HIGH EXPLOSIVE MAGAZINE	Out Grant
105	AIRFIELD LIGHTING VAULT	Maintenance
120	HAZARDOUS MATERIAL STORAGE COMPOUND	Mothballed
134	HAZARDOUS MATERIAL STORAGE	Mothballed
135	AIRCRAFT READY FUEL STORAGE TANK	Demolished
136	AIRCRAFT READY FUEL STORAGE TANK	Demolished
137	AIRCRAFT FUEL STORAGE TANK	Maintenance
138	AIRCRAFT FUEL STORAGE TANK	Maintenance
139	AIRCRAFT FUEL STORAGE TANK	Maintenance
140	AIRCRAFT FUEL STORAGE TANK	Maintenance
141	TANK TRUCK FILLING RACK	Maintenance
143	HIGH EXPLOSIVE MAGAZINE	Ordinance
147	HIGH EXPLOSIVE MAGAZINE	Ordinance
148	ENLISTED MEN'S BARACKS	Mothballed
158	AIRFIELD FLIGHT OPERATIONS BUILDING	Office
158A	P3-A MONUMENT	
158B	NAVY LOCKED P2-E NEPTUNE MONUMENT	
159	BUS/PERSONNEL SHELTER	Demolished
160	BUS/PERSONNEL SHELTER	Demolished
161	SERVICE STATION/FUEL ISLAND 1 & 2	Maintenance
167	WAR/FUELING PER	Mothballed
168	VEHICULAR BRIDGE	Maintenance
169	VEHICULAR BRIDGE	Maintenance
170	LIQUID OXYGEN/NITROGEN FACILITY	Demolished
175	LINE MAINTENANCE SHELTER	Demolished
176	LINE MAINTENANCE SHELTER	Demolished
184	MAINTENANCE STORAGE	Maintenance
191	STORM DRAIN PUMP HOUSE	Maintenance
199	READY AMMUNITION MAGAZINE	Demolished
1A	Storage	
329	CONTAMINATED FUEL STORAGE TANK	Maintenance
329	RECEIVER BUILDING	Storage
330	OPEN STORAGE COMPOUND	Maintenance
331	AIRFIELD STORAGE	Storage
342	FUEL FARM STORAGE	Storage
348	FUEL FARM SAMPLING/TEST BUILDING	Office
359	GOLF COURSE GROUNDS MAINTENANCE SHOP	Storage
360	FUEL ADDITIVE STORAGE TANK	Storage
361	CONTAMINATED FUEL STORAGE TANK	Maintenance
372	FUEL LOADING RACK RESTROOM	Storage
382	AIRCRAFT LINE OPERATIONS FACILITY	Aircraft
390	FUEL PARTS STORAGE	Storage
395	TEST CELL STORAGE	Demolished
399	COVERED STORAGE GOLF COURSE LANDSCAPING EQUIP	Storage
400	AIR OPERATIONS STORAGE	Unused
402	BUS/PERSONNEL SHELTER	Unused
409	ABOVE GROUND FUEL DISPENSING TANK	Maintenance
439	AIRCRAFT WASH RACK	Aircraft
439A	EASTERN SIDE AQUIFER TREATMENT SYSTEM (EATS)	
446	COMMUNICATIONS TACAN FACILITY	Aircraft
455	GOLF CART CHARGING AND MAINTENANCE FACILITY	Storage
454	OPERATIONAL STORAGE	Aircraft
471	HAZARDOUS MATERIAL STORAGE	Maintenance
483	GROUND SUPPORT EQUIPMENT SHED	Mothballed
484	AIRLINE WATER SHOP	Maintenance
485	GUARD & WATCH TOWERS	Support
486	HIGH EXPLOSIVE MAGAZINE	Ordinance
487	HIGH EXPLOSIVE MAGAZINE	Ordinance
488	HIGH EXPLOSIVE MAGAZINE	Ordinance
489	HIGH EXPLOSIVE MAGAZINE	Ordinance
490	HIGH EXPLOSIVE MAGAZINE	Ordinance
491	HIGH EXPLOSIVE MAGAZINE	Ordinance
498	HAZARD WASTE STORAGE AREA	Mothballed
499	GROUND SUPPORT EQUIPMENT SHED	Mothballed
502	GOLF COURSE RESTROOMS	Exchange
511	GUIDED MISSILE REGISTRATION	Mothballed
528	HIGH EXPLOSIVE MAGAZINE	Ordinance
537	GOLF COURSE RESTROOMS	Storage
541	A/MD CLASSROOMS	Mothballed
545	FUEL FARM OFFICES	Office
561	MISSILE MAGAZINE	Ordinance
573	FIRE TRAINING BURN PIT	Storage
580	CRASH & STRUCTURAL FIRE STATION	Office
582	ELLIS GATE MARQUEE	Exchange
591	115/12KV MAIN ELECTRICAL SUBSTATION	Maintenance
650	ADMINISTRATION BUILDING	Maintenance
651	BATTERY LOCKER/SHOP	Maintenance
653	ADMINISTRATION BUILDING	Office
654	ADMINISTRATION BUILDING	Office
655	MOBILITY WAREHOUSE A	Aircraft
656	129TH RESCUE OPERATIONS	Aircraft
657	WAREHOUSE F	Maintenance
658	WAREHOUSE F	Unused
659	WAREHOUSE G	Storage
660	WAREHOUSE H	Storage
661	WAREHOUSE I	Storage
662	AIRCRAFT MAINTENANCE HANGAR	Out Grant
669	PROPULSION TRAINING FACILITY	Deactivated
679	CIVIL ENGINEERING WAREHOUSE	Office
680	ANG HEADQUARTERS	Office
681	BASE SUPPLY EQUIPMENT WAREHOUSE	Storage
682	HAZARDOUS/FLAMMABLE MATERIAL STORAGE FACILITY	Unused
683	ANG CIVIL ENGINEERING	Maintenance
684	GROUND SUPPORT MAINTENANCE	Storage
685	TAC Medical Clinic	Housing
686	PARACHUTE SURVIVAL GEAR REPAIR SHOP	Office
750	TELEPHONE REMOTE SWITCH	Office
901	CRYOGENICS FACILITY	Maintenance
934	GOLF COURSE CLUB HOUSE (19TH HOLE)	Office
949	READY ISSUE MAGAZINE	Mothballed
953	AIRCRAFT READY FUEL DAY TANK AND PUMPING STAT	Maintenance
954	AIRCRAFT HONEY BUCKET WASTE DISPOSAL RESTROOM	Mothballed
956	PARACHUTE LOFT	Mothballed
956A		
N210	FLIGHT SYS. RESEARCH LAB.	Research/Dev
N211	FLIGHT SUPPORT FACILITY	Research/Dev
N212	MODEL DEVELOPMENT BLDG.	Shop/Indust
N213	RESEARCH SUPPORT BUILDING	Research/Dev
N239	LIFE SCIENCES LABORATORY	Laboratory
N239A	LIFE SCI. LAB. HIGH BAY	Laboratory
N242	SYSTEMS DEVELOPMENT FAC.	Research/Dev
N243	FLT & GUIDANCE SIMULA. LAB.	Laboratory
N248	AIRCRAFT SERVING FAC.	Aircraft
N248A	GRD SUPP EQUIP BLDG.	Aircraft
N248B	GRD SUPP EQUIP BLDG. No. 2	Aircraft
N248C	ROTORCRAFT MAINTENANCE FACILITY	Aircraft
N248D	AIRCRAFT SVC. STORAGE BLDG.	Aircraft
N248E	AIRCRAFT WASH RACK	Aircraft
N259	AIRCRAFT OPERATIONS SUPPORT FACILITY	Research/Dev
NA292	V-TOL PAD	

RUNWAY END DATA						
APPROACH END OF RUNWAY		32L	14R	32R	14L	
RUNWAY THRESHOLD COORDINATES	Latitude	Existing 37° 24.367500'	14R 37° 25.513833'	32R 37° 24.332500'	14L 37° 25.735500'	
	Future	No Change	No Change	No Change	No Change	
Longitude	Existing	122° 02.712833'	122° 03.302667'	122° 02.556167'	122° 03.277000'	
	Future	No Change	No Change	No Change	No Change	
RUNWAY END COORDINATES	Latitude	Existing 37° 25.513833'	37° 24.274250'	37° 25.735500'	37° 24.332500'	
	Future	No Change	No Change	No Change	No Change	
Longitude	Existing	122° 03.302667'	122° 02.664540'	122° 03.277000'	122° 02.556167'	
	Future	No Change	No Change	No Change	No Change	
RUNWAY END ELEVATIONS		Existing 32'	0.1'	27.3'	1.2'	
Future		No Change	No Change	No Change	No Change	
RUNWAY MARKING		Existing Nonprecision	Nonprecision	Precision	Precision	
Future		No Change	No Change	No Change	No Change	
RUNWAY TOUCH DOWN ZONE ELEVATIONS		Existing 31'	N/A	27'	2'	
Future		No Change	No Change	No Change	No Change	
NAVIGATION AIDS		Existing Tacan	None	ILS/Tacan	Loc/DME	
Future		No Change	No Change	No Change	No Change	
VISUAL AIDS		Existing None	None	ALSFL, TDZL, P/L, PAPI (P4L)	PAPI (P4L)	
Future		No Change	No Change	No Change	No Change	
APPROACH TYPE (FAR Part 77 Category)		Existing Nonprecision	Visual	Precision	Nonprecision	
Future		No Change	No Change	No Change	No Change	
APPROACH VISIBILITY (Minimums)		Existing 1 Mile	1 Mile	3/4 Mile	1 Mile	
Future		No Change	No Change	No Change	No Change	
APPROACH SLOPE (Required/Clear)		Existing 34:1 / 34:1	20:1 / 64:1	50:1 / 50:1	34:1 / 59:1	
Future		No Change	No Change	No Change	No Change	
RUNWAY SAFETY AREA (Width)		Existing 500'	500'	500'	500'	
Future		No Change	No Change	No Change	No Change	
RUNWAY SAFETY AREA (Length Beyond Runway End)		Existing 1,000'	1,000'	1,000'	1,000'	
Future		No Change	No Change	No Change	No Change	
OBSTACLE FREE ZONE (Width)		Existing 400'	400'	400'	400'	
Future		No Change	No Change	No Change	No Change	
OBSTACLE FREE ZONE (Length Beyond Runway End)		Existing 200'	200'	200'	200'	
Future		No Change	No Change	No Change	No Change	
RUNWAY OBJECT FREE AREA (Width)		Existing 800'	800'	800'	800'	
Future		No Change	No Change	No Change	No Change	
RUNWAY OBJECT FREE AREA (Length Beyond Runway End)		Existing 1,000'	1,000'	1,000'	1,000'	
Future		No Change	No Change	No Change	No Change	
HOLD LINE (DISTANCE FROM RUNWAY CL)		Existing 280'	280'	280'	280'	
Future		No Change	No Change	No Change	No Change	

- ### NOTES
- Airport coordinate data source: National Oceanic and Atmospheric Administration (NOAA) Obstruction Chart dated May 4, 1992. Data is NAD 83 and NAVD 88. NOAA's VERTCON program used to convert original NGVD 29 data to NAVD 88.
 - The airport is in Township 6 South, Range 2 West, Section 14.
 - Building restriction line (BRL) based on 50' building height.
 - Nonstandard Conditions: Hangar 001, 046 and 047 building heights are above the FAR Part 77 Transitional Surface.)
 - Acceptance of these documents by the FAA does not in any way constitute a commitment on the part of the United States to participate in any development depicted herein, nor does it indicate that the proposed development is environmentally acceptable in accordance with appropriate public laws.



CROSSWIND COVERAGE

Runways 14L - 32R and 14R - 32L

10.5 Knots	95.9%
13.0 Knots	98.6%
16.0 Knots	99.3%
20.0 Knots	99.4%

Source: NOAA observations for 2003 - 2009

AIRPORT DATA

	EXISTING	FUTURE
AIRPORT REFERENCE CODE	D-VI	No Change
AIRPORT REFERENCE POINT	Latitude N 37° 24.97'	No Change
Longitude	W 122° 02.95'	No Change
AIRPORT ELEVATION (Above Mean Sea Level)	32'	No Change
MEAN MAX. TEMP. (Hottest Month)	78.4° F (July)	No Change
AIRPORT AND TERMINAL NAVIGATIONAL AIDS	Beacon, VOR/DME	No Change
GPS APPROACH ESTABLISHED	No	No Change
AIRPORT ACREAGE	Fee Simple 952	No Change
Avigation Easement	18,000	No Change
Tie downs	18,000	No Change
AIRCRAFT PARKING SPACES	Hangar (SF) 950,000	No Change

TAXIWAY DATA

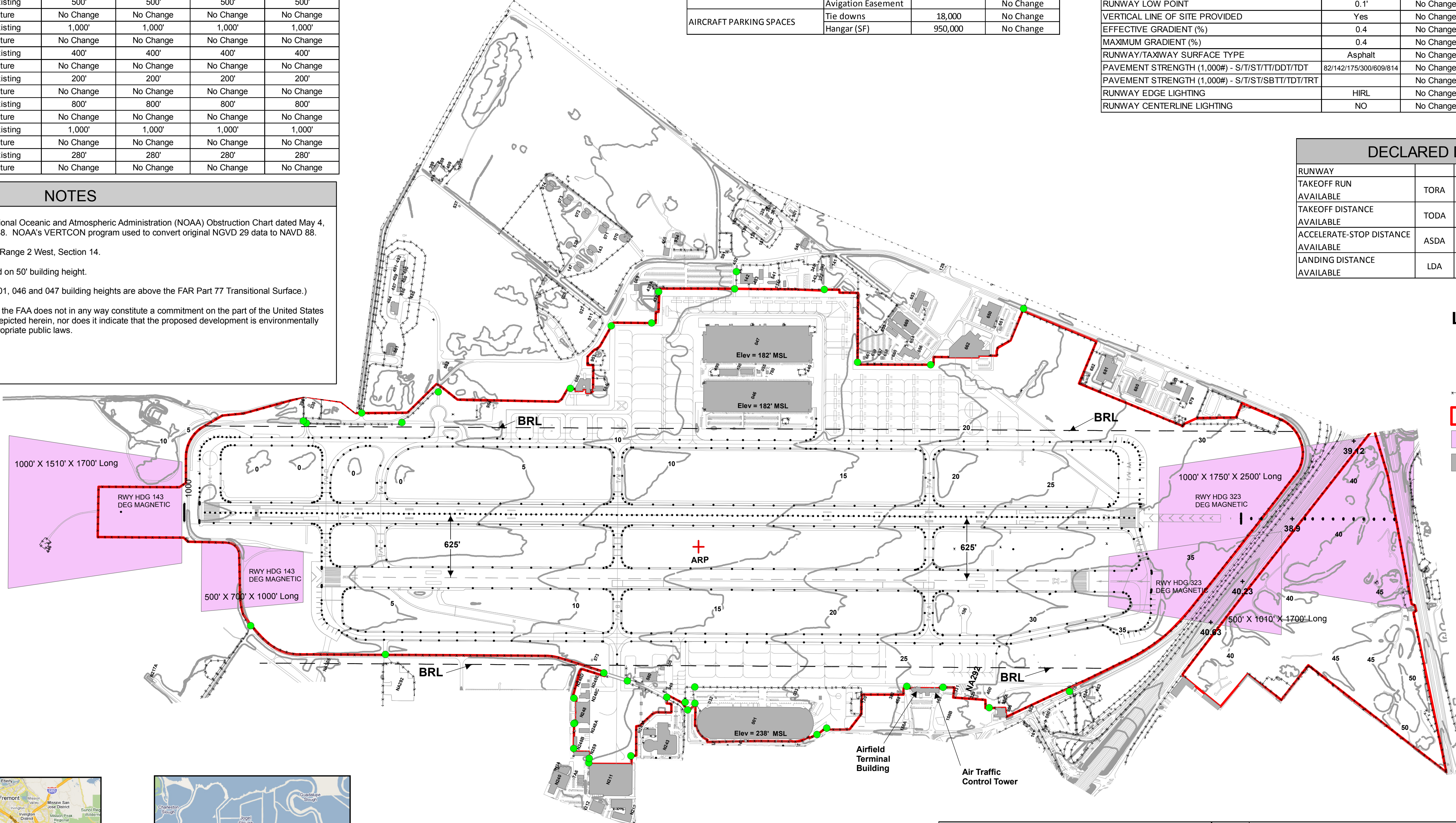
TAXIWAY	DESIGN GROUP	WIDTH	SURFACE TYPE	RWY CL. To EXISTING	TWY CL. To EXISTING	SAFETY AREA WIDTH	TAXIWAY FREE AREA WIDTH	TWY. CL. TO FIXED OR	TAXIWAY WING TIP CLEARANCE
AA	D-VI	No Change 75'	Concrete	No Change	N/A	> 262'	No Change > 386'	No Change > 193'	No Change > 62'
A	D-VI	No Change 75'	Concrete	No Change	N/A	> 262'	No Change > 386'	No Change > 193'	No Change > 62'
B	D-VI	No Change 75'	Concrete	No Change	N/A	> 262'	No Change > 386'	No Change > 193'	No Change > 62'
C	D-VI	No Change 75'	Concrete	No Change	N/A	> 262'	No Change > 386'	No Change > 193'	No Change > 62'
D	D-VI	No Change 75'	Concrete	No Change	N/A	> 262'	No Change > 386'	No Change > 193'	No Change > 62'
PARALLEL WEST	D-VI	No Change 75'	Concrete	No Change	577	> 262'	No Change > 386'	No Change > 193'	No Change > 62'
EAST	D-VI	No Change 75'	Concrete	No Change	750	> 262'	No Change > 386'	No Change > 193'	No Change > 62'

RUNWAY DATA

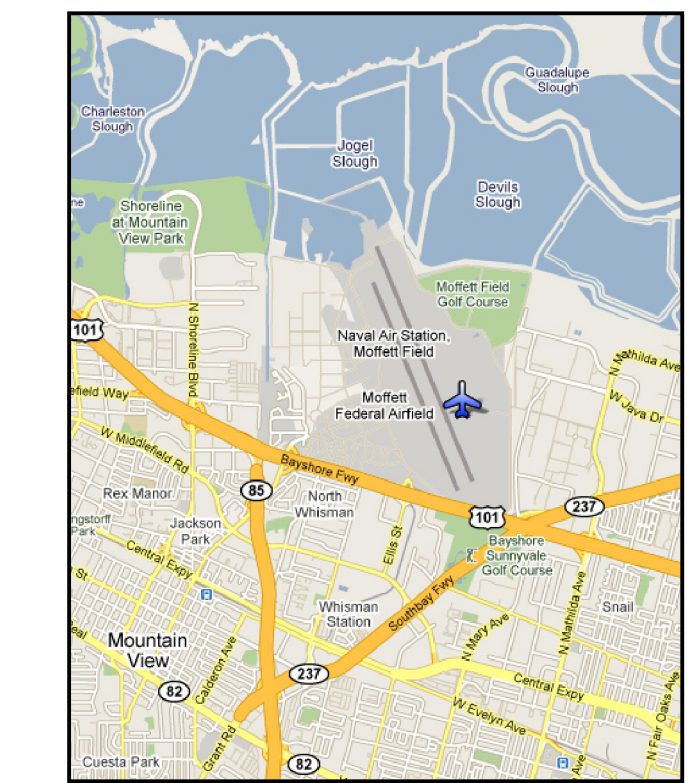
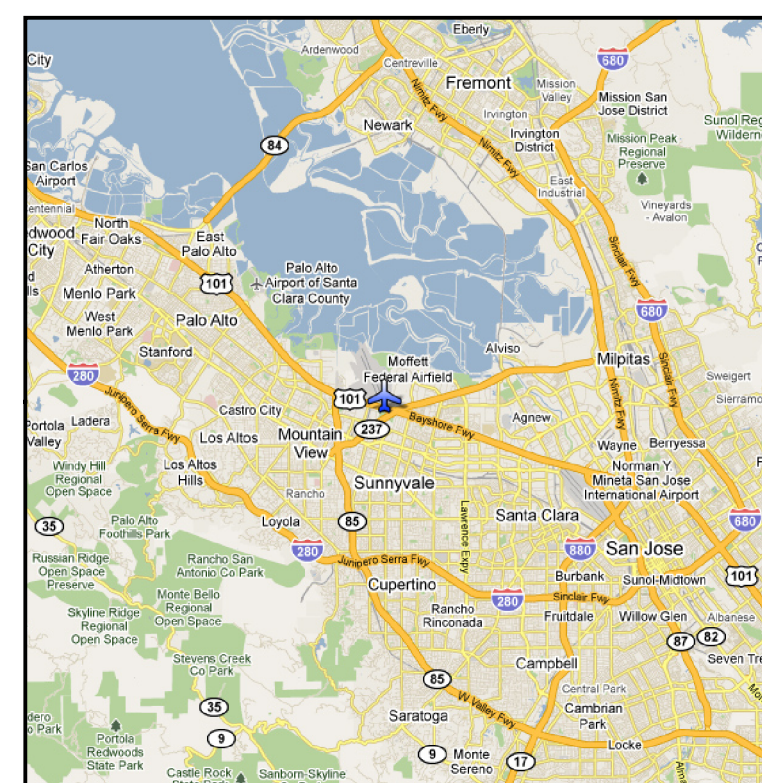
AIRPORT REFERENCE CODE	RUNWAY 32L/14R		RUNWAY 32R/14L	
	EXISTING	FUTURE	EXISTING	FUTURE
D-VI	No Change	No Change	D-VI	No Change
AIRCRAFT WINGSPAN	B747-400 / AN124 232'	No Change	B747-400 / AN124 232'	No Change
CRITICAL AIRCRAFT UNDERCARRIAGE WIDTH	41' 9"	No Change	41' 9"	No Change
APPROACH SPEED (kts.)	154	No Change	154	No Change
MAX TAKEOFF WT. (lbs)	930,000	No Change	930,000	No Change
PHYSICAL LENGTH AND WIDTH	8127' X 200'	No Change	9202' X 200'	No Change
RUNWAY HIGH POINT	32'	No Change	27.3'	No Change
RUNWAY LOW POINT	0.1'	No Change	1.2'	No Change
VERTICAL LINE OF SITE PROVIDED	Yes	No Change	Yes	No Change
EFFECTIVE GRADIENT (%)	0.4	No Change	0.3	No Change
MAXIMUM GRADIENT (%)	0.4	No Change	0.3	No Change
RUNWAY/TAXIWAY SURFACE TYPE	Asphalt	No Change	Concrete	No Change
PAVEMENT STRENGTH (1,000#) - S/T/S/T/TT/DDT/TDT	82/142/175/300/609/914	No Change		No Change
PAVEMENT STRENGTH (1,000#) - S/T/S/BBT/TDT/RT		No Change	64/110/144/410/528	No Change
RUNWAY EDGE LIGHTING	HIRL	No Change	HIRL	No Change
RUNWAY CENTERLINE LIGHTING	NO	No Change	YES	No Change

DECLARED DISTANCES

RUNWAY	32L	14R	32R	14L
TAKEOFF RUN AVAILABLE (TORA)	7522'	8127'	9202'	9202'
TAKEOFF DISTANCE AVAILABLE (TODA)	8312'	8707'	10202'	10392'
ACCELERATE-STOP DISTANCE AVAILABLE (ASDA)	8312'	8127'	10202'	10002'
LANDING DISTANCE AVAILABLE (LDA)	7522'	8127'	9202'	9202'

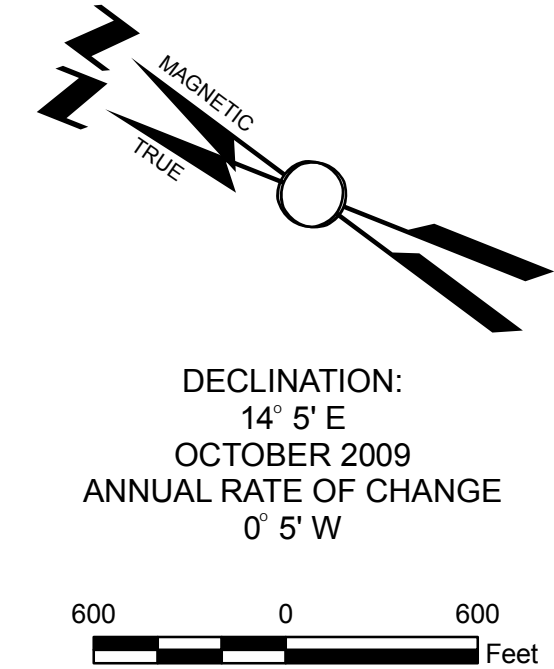


- ### Legend
- Access Gate
 - Lights
 - Security Fence
 - ▭ Airfield Boundary
 - ▭ Runway Protection Zone
 - ▭ Building



Location Map

Vicinity Map



SUBMITTED BY:					
By	Date	No.	Revision	Sponsor	Date
MOFFETT FEDERAL AIRFIELD					
MOFFETT FIELD, CALIFORNIA					
AIRPORT LAYOUT PLAN					
DESIGN:	DRAWN BY: Charles Tonda	DATE: 06/08/10	SHEET 1 OF 5		