

Appendix G

Pavement Classification Number

Table G-1 2012 Traffic Distribution

Aircraft Type	Weight (Kips)	2002 Traffic Operation (Annual)		2012 Traffic Operation (10 Years)	
	Takeoff	RW14L	RW14R	RW14L	RW14R
747	750	284	122	28	12
757	240	4	2	224	96
A-10	50	14	6	14	6
AN124	810	17	7	196	84
C-12	16.6	420	180	n/a	n/a
C-130	143	752	322	5,075	2,175
C-141	296	42	18	n/a	n/a
C-17	580	42	18	392	168
C-170	6	35	15	n/a	n/a
C-20	69.7	35	15	126	54
C-5A	693	14	6	154	66
C-9	110	34	14	70	30
Canberra	25	35	15	n/a	n/a
Cessna 421	7.5	280	120	826	354
Cessna Turbo	8.8	35	15	n/a	n/a
CIT-500	18	35	15	n/a	n/a
E-2	51.9	7	3	56	24
FA-18	51.9	1120	480	1,176	504
G-4	18	28	12	n/a	n/a
H-1	14.8	70	30	n/a	n/a
H-46	23	35	15	n/a	n/a
H-500	16.3			n/a	n/a
H-53	69.8	14	6	28	12
H-58	24.8	280	120	n/a	n/a
H-60	16.3	2471	1059	2,450	1,050
P-3	119	280	120	322	138
PA-24	6	14	6	n/a	n/a
PA-28	6	70	30	n/a	n/a
S-3	52.5	8	4	n/a	n/a
S-65	18	3500	1500	n/a	n/a
T-1	18	70	30	n/a	n/a
T-34	4.3	35	15	n/a	n/a
T-37	6.6	35	15	n/a	n/a
T-38	12	280	120	168	72
T-39	18	7	3	n/a	n/a
T-45	14.5	35	15	n/a	n/a
737	82.5	n/a	n/a	98	42
767	409	n/a	n/a	336	144
KC-135	323	n/a	n/a	98	42
F-16	35.4	n/a	n/a	70	30
F-5	12.7	n/a	n/a	56	24
UH-1/AH-1	11.5	n/a	n/a	98	42

Table G-2 2002 Runway Structure Information

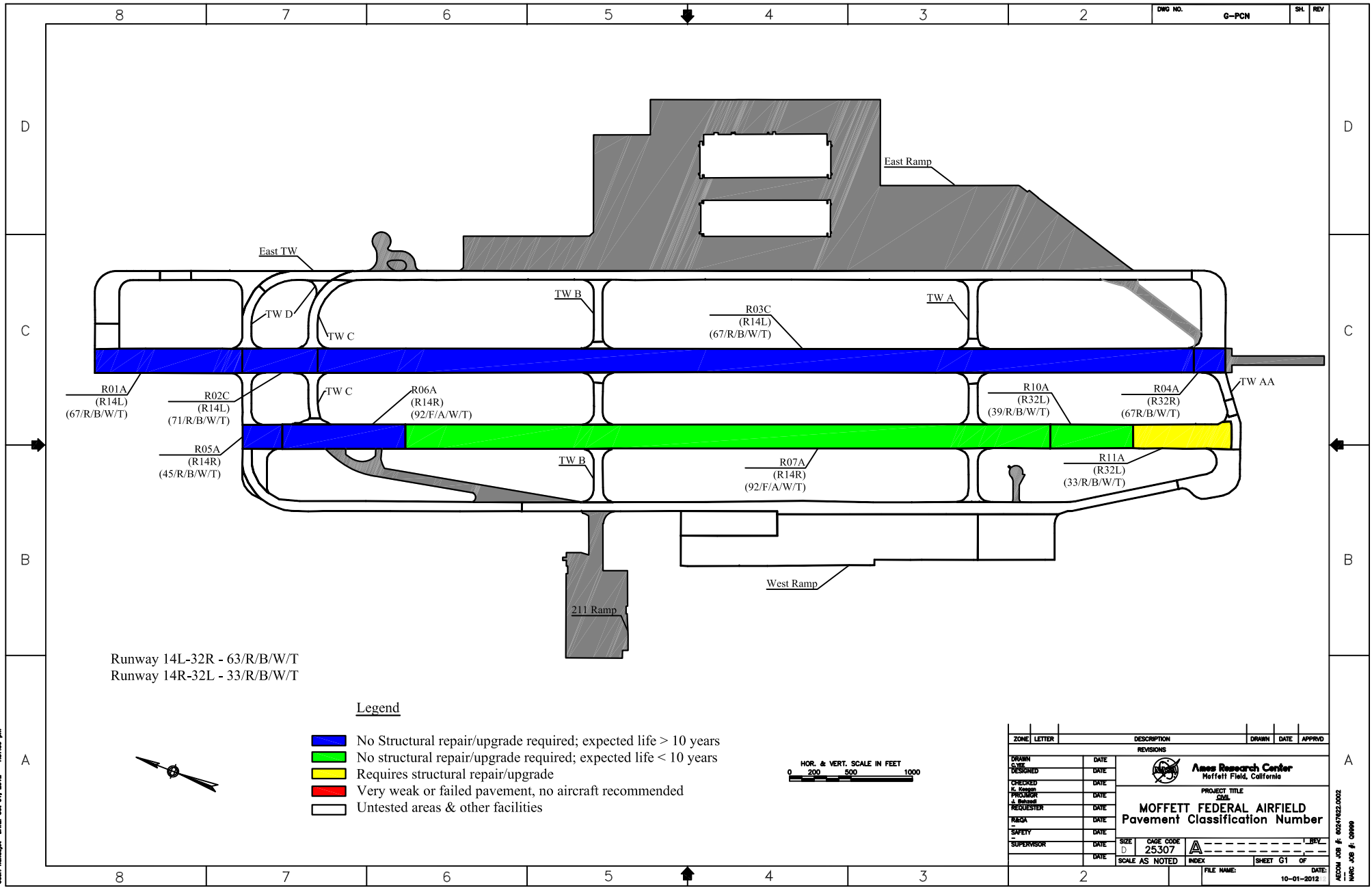
SECTION (2002)	SECTION (2012)	PAVEMENT			BASE		SUBGRADE		Error (%)	PCN (2002)
		TYPE	DEPTH (IN)	WESDEF E (KSI)	DEPTH (IN)	WESDEF E (KSI)	DEPTH WESDEF (IN)	WESDEF E (KSI)		
R14L-01	R03C and R04A	PCC	7.0	3,288	10.0	521	223	13.2	1.0	47/R/BW/T
R14L-1B	part R02C (int TW C)	PCC	12.5	4,630	16.0	172	212	22.7	0.4	71/R/BW/T
R14L-02	R02C	PCC	11.0	4,162	16.0	197	213	17.2	0.2	55/R/BW/T
R14L-03	R01A	PCC	11.0	6,457	12.0	399	217	16.2	0.8	78/R/BW/T
R14L-04	R01A	PCC	11.0	5,395	12.0	253	217	25.6	0.4	68/R/BW/T
R14R-01	R06A and R07A	AC	12.0	364	12.0	154	216	19.9	0.5	99/F/AW/T
R14R-02	R05A	PCC	11.0	5,917	16.0	120	213	19.4	0.2	101/R/BW/T
R14R-03	R10A	PCC	10.0	6,370	6.0	367	224	22.9	0.7	59/R/BW/T
R14R-04	R11A	PCC	9.0	5,986	15.0	149	216	11.5	0.5	91/R/BW/T

Table G-3 ACN Information

Aircraft	Load	Peacetime Take-Off Weight (lbs)	Rigid Pavement				Flexible Pavement			
			A K>400 E>57022	B K≤400 K>200 E≤57022 E>23416	C K≤200 K>100 E≤23416 E>9616	D K≤100 E≤9616	A CBR>13 E>19500	B CBR≤13 CBR>8 E≤19500 E>12000	C CBR≤8 CBR>4 E≤12000 E>6000	D CBR≤4 E≤6000
F-14*	Full	72,000	28.7	28.7	28.7	28.7	27.7	27.7	27.7	27.7
	Half	54,350	21.6	21.6	21.6	21.6	20.9	20.9	20.9	20.9
	Empty	36,700	14.5	14.5	14.5	14.5	14.1	14.1	14.1	14.1
P-3*	Full	135,000	40.3	42.5	44.2	45.1	35.7	38.6	41.8	44.5
	Half	100,600	28.6	30.3	31.6	32.4	25.4	27.0	29.5	32.2
	Empty	66,200	16.9	18.0	19.1	19.7	15.2	15.4	17.1	19.9
C-130*	Full	155,000	26.6	29.4	32.1	34.2	24.1	28.1	30.5	35.5
	Half	113,500	19.1	21.0	22.8	24.2	17.3	20.1	21.7	25.0
	Empty	72,000	11.6	12.6	13.4	14.2	10.4	12.1	12.9	14.4
C-141*	Full	325,000	41.5	50.2	58.9	65.4	43.8	50.3	61.5	75.1
	Half	232,500	27.3	32.6	38.4	43.0	29.2	32.9	39.5	49.3
	Empty	140,000	13.0	15.1	17.9	20.6	14.6	15.5	17.5	23.4
C-5A*	Full	769,000	25.7	30.5	39.5	48.8	32.6	36.0	44.3	60.5
	Half	543,500	17.8	20.0	24.6	30.2	21.1	23.1	28.0	37.5
	Empty	318,000	9.9	9.9	9.9	11.6	9.6	10.2	11.7	14.6
C-17*	Full	580,000	49.3	49.3	49.3	65.1	50.9	57.5	68.8	90.2
	Half	430,000	35.5	35.5	35.5	44.1	35.4	39.3	46.7	61.0
	Empty	280,000	21.7	21.7	21.7	23.1	19.9	21.1	24.6	31.8
B737**	Full	64,000	38.0	40.0	42.0	43.0	33.0	35.0	39.0	43.0
	Empty	32,000	17.0	18.0	19.0	20.0	15.0	16.0	17.0	20.0
B747**	Full	877,000	53.0	62	74.0	85.0	53.0	59.0	73.0	94.0
	Empty	395,000	19.0	21	25.0	29.0	20.0	21.0	23.0	30.0
B767**	Full	317,000	39.0	46.0	55.0	63	40.0	44.0	52.0	71.0
	Empty	181,000	17.0	19.0	20.0	25	17.0	18.0	20.0	25.0

*From 2002 report

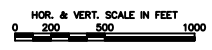
**From published manufacturer technical specifications



Runway 14L-32R - 63/R/B/W/T
 Runway 14R-32L - 33/R/B/W/T

Legend

- No Structural repair/upgrade required; expected life > 10 years
- No structural repair/upgrade required; expected life < 10 years
- Requires structural repair/upgrade
- Very weak or failed pavement, no aircraft recommended
- Untested areas & other facilities



ZONE	LETTER	DESCRIPTION	DRAWN	DATE	APPROV
REVISIONS					
DRAWN		DATE	 Ames Research Center Moffett Field, California PROJECT TITLE MOFFETT FEDERAL AIRFIELD Pavement Classification Number		
DESIGNED		DATE			
CHECKED		DATE			
PLOTTED		DATE			
REQUESTER		DATE			
REVISION		DATE			
SAFETY		DATE	SHEET: 25307 SCALE: AS NOTED	CASE CODE: 25307 INDEX: △	SHEET: 01 OF 01
SUPERVISOR		DATE	FILE NAME: _____ DATE: 10-01-2012		

I:\work\80247822_Dramp\400 TECHNICAL\0_Draft\0_Vmap\AmesStd_BDR24338.dwg I:\work\80247822_Dramp\400 TECHNICAL\0_Prior reports\ARCBL_MASTER PLAN.dwg
 Date: 10/01/2012 09:01:11 AM
 User: hmc007

AECOM JOB #: 80247822.0002
 HMC JOB #: 09090