

Appendix A

A1 Network Definition

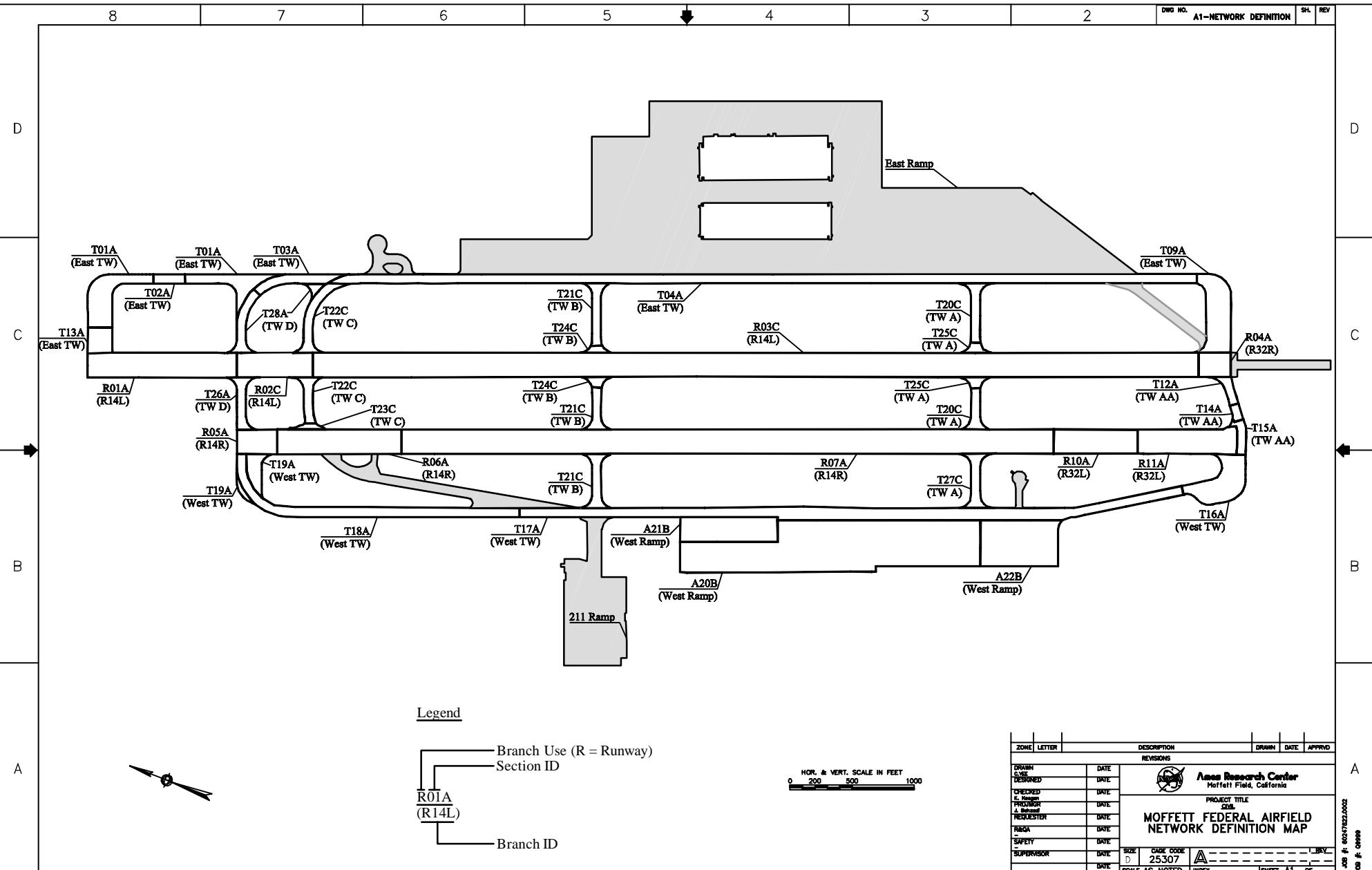
A2 Inspection Map

A3 Sample Identification Map

A4 Work History Table

Appendix A

A1 Network Definition



L:\work\00247822_Orange\400 TECHNICAL\A_Draft\p\0_map\Area\Map\Area_V1.dwg
 User: merrill DATE: Aug 22, 2012 10:58:58 am

AECOM JOB # 00247822-002
 HMC JOB # 00000

Legend

- Branch Use (R = Runway)
- Section ID
- Branch ID

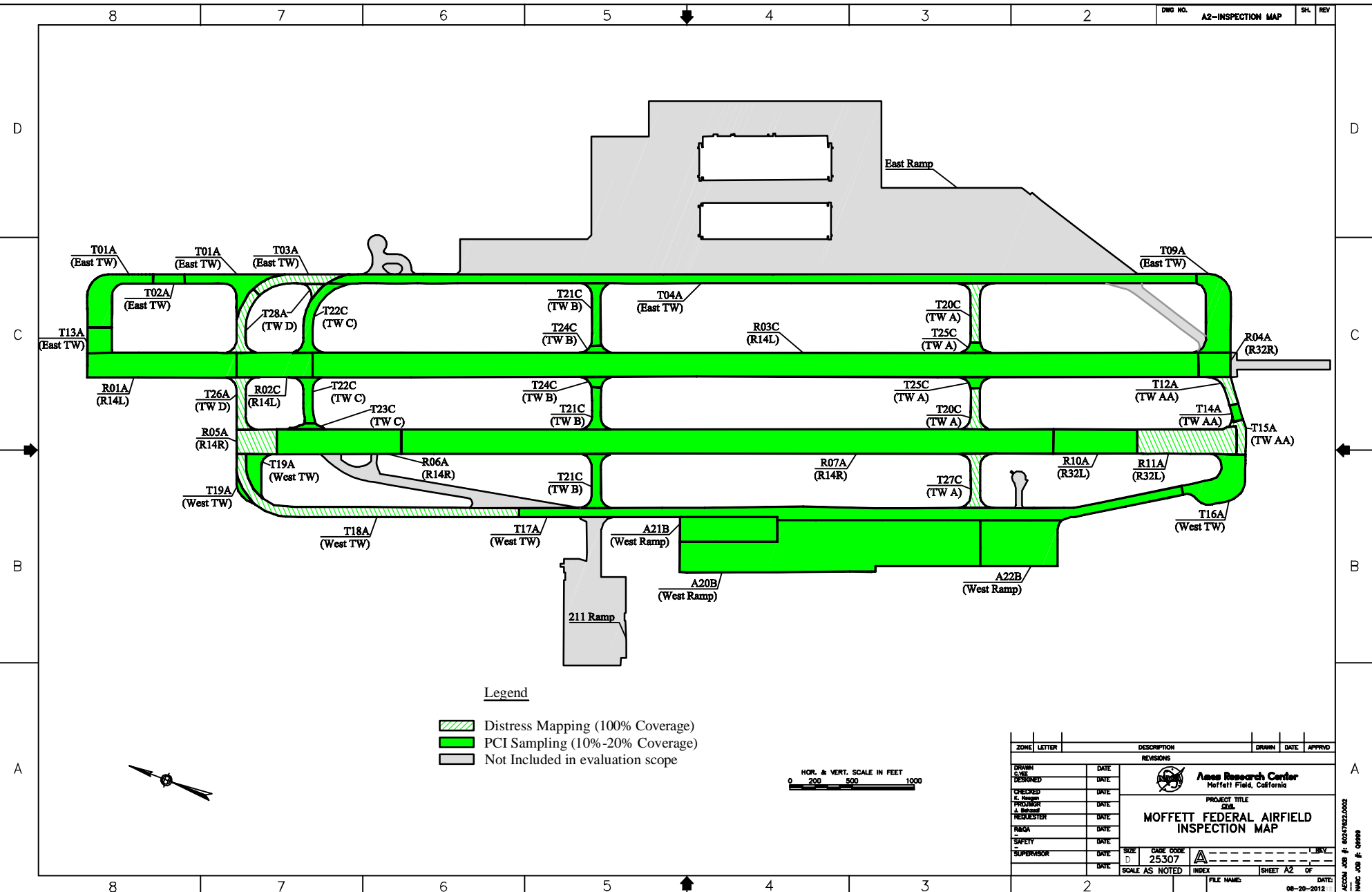
R01A (R14L)

HOR. & VERT. SCALE IN FEET
 0 250 500 1000

ZONE	LETTER	DESCRIPTION	DRAWN	DATE	APPROV
REVISIONS					
DRAWN	DATE	 Ames Research Center Moffett Field, California PROJECT TITLE 2511 MOFFETT FEDERAL AIRFIELD NETWORK DEFINITION MAP			
DATE DESIGNED	DATE				
CHECKED	DATE				
PROJ. MGR.	DATE				
REQUESTER	DATE				
ISSUED	DATE	SCALE AS NOTED	INDEX	SHEET A1 OF	DATE
SAFETY	DATE	FILE NAME: 08-20-2012			
SUPERVISOR	DATE	MOFFETT_FINAL_V1.DWG			

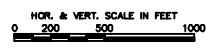
Appendix A

A2 Inspection Map



Legend

- Distress Mapping (100% Coverage)
- PCI Sampling (10%-20% Coverage)
- Not Included in evaluation scope



ZONE	LETTER	DESCRIPTION	DRAWN	DATE	APPROV
REVISIONS					
DRAWN	DATE	 Ames Research Center Moffett Field, California PROJECT TITLE 2511 MOFFETT FEDERAL AIRFIELD INSPECTION MAP			
DATE DESIGNED	DATE				
CHECKED	DATE				
PRODUCTION	DATE				
REQUESTER	DATE				
ISSUED	DATE	SCALE	INDEX	SHEET	OF
SAFETY	DATE	SCALE AS NOTED	INDEX	SHEET A2	OF
SUPERVISOR	DATE	FILE NAME	DATE	08-20-2012	

L:\work\00247822_Orange\400 TECHNICAL\A_Draft\p\0_map\Ames\00247822_Orange\400 TECHNICAL\A_Prior reports\WCSG_MASTER PLAN.dwg
 User: rreese DATE: Aug 22, 2012 10:51:41 am
 LAST SAVED BY: REESE

AECOM JOB #: 00247822-002
 HVAC JOB #: 00890

Appendix A

A3 Sample Identification Map

8

7

6

5

4

3

2

D

D

C

C

B

B

A

A

East Ramp

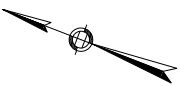
211 Ramp

Legend

- Branch Use (R = Runway)
- Section ID
- Branch ID

HOR. & VERT. SCALE IN FEET

0 200 500 1000



ZONE	LETTER	DESCRIPTION	DRAWN	DATE	APPRVD
REVISIONS					
DRAWN	C.YEE	DATE			
DESIGNED		DATE			
CHECKED	K. Keegan	DATE			
PROJ/MGR	J. Behzadi	DATE			
REQUESTER		DATE			
R&QA		DATE			
SAFETY		DATE			
SUPERVISOR		DATE			
SIZE	D	CAGE CODE	25307		REV
SCALE	AS NOTED	INDEX			SHEET A3 OF 3
FILE NAME:		DATE: 08-20-2012 12			

Ames Research Center
Moffett Field, California

PROJECT TITLE
CIVIL
**MOFFETT FEDERAL AIRFIELD
SAMPLE UNIT IDENTIFICATION**

DWG: L:\work\60247622_Orange\400 TECHNICAL\5_Draft_rpt\0_map\AmesStd_BDR24X36.dwg
 User: handjot DATE: Aug 24, 2012 - 7:38:20 am

AECOM JOB #: 60247622.0002
 NARC JOB #: 09999

Appendix A

A4 Work History Table

Construction History

Branch ID	Section ID 2012	Section ID 2002	Section From Surface to Subgrade	Date Constructed	Date Repaired
Runway 14L	R01A	14L-03 14L-04	<u>SECTION OF RUNWAY 14L-32R</u> Spall repair Spall/Joint repair, slabs replaced Spall/Joint repair 11" Portland Cement Concrete 12" Base	1957 1957	2012 1992 1983
Runway 14L	R02C	14L-02	<u>SECTION OF RUNWAY 14L-32R</u> Spall repair Spall/Joint repair, slabs replaced Spall/Joint repair Spall/Joint repair 11" Portland Cement Concrete 16" Base (CBR 60)	1952 1952	2012 1992 1983 1966
Runway 14L (14L-32R)	R03C	14L-01	<u>SECTION OF RUNWAY 14L-32R</u> Spall repair Spall repair (from TW AA to TW A) Spall/Joint repair, slabs replaced Spall/Joint repair Spall/Joint repair w/SS-S167 Spall/Joint repair w/SS-S164 8" Reinforced Portland Cement Conc. 12"Crusher run base (CBR 90) 4" Pea gravel w/perforated 4"drains, 40' center to center	1946 1946 1946	2012 2011 1992 1983 1970 1966
Runway 14L (14L-32R)	R04A	14L-01	<u>SECTION OF RUNWAY 14L-32R</u> Spall repair Spall/Joint repair, slabs replaced Spall/Joint repair Spall/Joint repair w/SS-S167 Spall/Joint repair w/SS-S164 8" Reinforced Portland Cement Conc. 12"Crusher run base (CBR 90) 4" Pea gravel w/perforated 4"drains, 40' center to center	1946 1946 1946	2012 1992 1983 1970 1966
Runway 14R	R05A	14R-02	<u>NORTH PORTION OF RUNWAY 14R-32L</u> Spall/Joint repair with SS/S167 11" Portland Cement Concrete 16" Base (CBR 60)	1952 1952	1970

Construction History

Branch ID	Section ID 2012	Section ID 2002	Section From Surface to Subgrade	Date Constructed	Date Repaired
Runway 14R (14R-32L)	R06A	14R-01	<u>PORTION OF RUNWAY 14R-32L</u> (Core 12 ¾" to 14 ¾" AC varies, 2"min base) 4" to 6" AC overlay w/reinf fabric Slurry Seal 3" AC overlay 3" Bituminous base 3" Asphalt Concrete 6" to 12" Mechanically stab base 3" Asphalt Concrete 12" Pit run gravel	1938 1938	(2002) 1979 1965 1953 1953 1952 1952
Runway 14R (14R-32L)	R07A	14R-01	<u>PORTION OF RUNWAY 14R-32L</u> Polymer Concrete Micro-Overlay (Core 12 ¾" to 14 ¾" AC varies, 2"min base) 4" to 6" AC overlay w/reinf fabric Slurry Seal 3" AC overlay 3" Bituminous base 3" Asphalt Concrete 6" to 12" Mechanically stab base 3" Asphalt Concrete 12" Pit run gravel	1938 1938	2008 (2002) 1979 1965 1953 1953 1952 1952
Runway 14R (32L)	R10A	14R-03	<u>PORTION OF RUNWAY 14R-32L</u> 10" Portland Cement Concrete 6" Cement Treated Base 4" Cold plant mix 12" Crusher run gravel	1941 1941	1979 1979
Runway 14R (32L)	R11A	14R-04	<u>SOUTH PORTION OF RUNWAY 14R-32L</u> Spall/Joint repair w/SS-S167 9" Reinforced Portland Cement Conc. 4" Penetration macadam 11" Portland Cement Concrete 4" Crusher run base	1944 1944 1944	1970 1952
East Taxiway	T01A	EPTW-04 EPTW-4C	<u>PORTION OF EAST PARALLEL TAXIWAY</u> 11" Portland Cement Concrete 12" Base	1957 1957	

Construction History

Branch ID	Section ID 2012	Section ID 2002	Section From Surface to Subgrade	Date Constructed	Date Repaired
East Taxiway	T02A	EPTW-4A	<u>NORTH PORTION OF EAST PARALLEL TAXIWAY</u> 36" AC overlay 12" Aggregate Base 11" Portland Cement Concrete 12" Base	1957 1957	1995 1995
East Taxiway	T03A	EPTW-03	11" Portland Cement Concrete 16" Base (CBR 60)	1952 1952	
East Taxiway	T04A	EPTW-01	<u>CENTER PORTION OF EAST PARALLEL TAXIWAY</u> (CORE 9" TO 10" PCC varies, 5 ½" AC min) 8" to 9" Portland Cement Conc. 2" Asphaltic Concrete Resealed Joint w/ SS-S164 7" Reinforced PCC 10" Crusher run base (CBR 90) 4" Pea gravel w/perforated 4" drains @ 40' center to center	1946 1946 1946	(2002) 1977 1977 1964
East Taxiway	T09A	EPTW-02	<u>SOUTH PORTION OF EAST PARALLEL TAXIWAY</u> 11" Portland Cement Concrete 8" Cement Treated Base 6" Lime Treated Base	1977 1977 1977	
East Taxiway	T13A	EPTW-4B	<u>NORTH PORTION OF EAST PARALLEL TAXIWAY</u> 24" AC overlay 11" Portland Cement Concrete 12" Base	1957 1957	1995
West Taxiway	T16A	WPTW-01 WPTW-01A	<u>SOUTH PORTION OF WEST PARALLEL TAXIWAY</u> 11" Portland Cement Concrete 6" Cement Treated Base 6" Lime Treated Base	1986 1986 1986	

Construction History

Branch ID	Section ID 2012	Section ID 2002	Section From Surface to Subgrade	Date Constructed	Date Repaired
West Taxiway	T17A	WPTW-02	<u>CENTER PORTION OF WEST PARALLEL TAXIWAY</u> Asphalt Crack Repair (CORE 2 ¾" TO 5" AC varies) 8" AC overlay w/reinforcing fabric 8" Portland Cement Concrete 12" Crusher run base (CBR 90) 4" Pea gravel w/perforated 4" drains @ 40' center to center	1946 1946 1946	2007 (2002) 1986
West Taxiway	T18A	WPTW-03	<u>PORTION OF WEST PARALLEL TAXIWAY</u> 11" Portland Cement Concrete 16" Base (CBR)	1952 1952	
West Taxiway	T19A	Not available			
Taxiway A	T20C T27C	TWA-01 TWA-02 TWA-03	<u>TAXIWAY ALPHA</u> 9" Portland Cement Concrete 2" AC Bond Breaker Resealed Joint w/SS-S164 8" Reinforced PCC 12" Crusher run base (CBR 90) 4" Pea gravel w/perforated 4" drains @ 40' center to center	1946 1946 1946	1986 1986 1964
Taxiway A	T25C	TWA-3B	<u>TAXIWAY ALPHA, WEST SECTION</u> Surface Seal/1"-2" AC overlay 9" Portland Cement Concrete 2" AC Bond Breaker Resealed Joint w/SS-S164 8" Reinforced PCC 12" Crusher run base (CBR 90) 4" Pea gravel w/perforated 4" drains @ 40' center to center	1946 1946 1946	1995 1986 1986 1964
Taxiway AA	T12A	TWAA-01	<u>TAXIWAY ALPHA-ALPHA, CENTER SECTION</u> 12" Portland Cement Concrete 18" Crusher run base (CBR 90) 4" Pea gravel w/perforated 4" drains @ 40' center to center	1946 1946 1946	

Construction History

Branch ID	Section ID 2012	Section ID 2002	Section From Surface to Subgrade	Date Constructed	Date Repaired
Taxiway AA	T14A	TWAA-1A	<u>TAXIWAY ALPHA-ALPHA, CENTER SECTION</u> (CORE 5" to 6" AC, 11 ½" PCC min) 6" AC overlay 12" Portland Cement Concrete 18" Crusher run base (CBR 90) 4" Pea gravel w/perforated 4" drains @ 40' center to center	1946 1946 1946	(2002) 1995
Taxiway AA	T15A	TWAA-02	<u>TAXIWAY ALPHA-ALPHA, CENTER SECTION</u> 12" Portland Cement Concrete 18" Crusher run base (CBR 90) 4" Pea gravel w/perforated 4" drains @ 40' center to center	1946 1946 1946	
Taxiway B	T21C	TWB-01 TWB-02 TWB-03	<u>TAXIWAY BETA</u> 9" Portland Cement Concrete 2" AC Bond Breaker Resealed Joint w/SS-S164 8" Reinforced PCC 12" Crusher run base (CBR 90) 4" Pea gravel w/perforated 4" drains @ 40' center to center	1946 1946 1946	1986 1986 1964
Taxiway B	T24C	TWB-2A TWB-3A	<u>TAXIWAY BETA, SECTION</u> Surface Seal/1"-2" AC overlay 9" Portland Cement Concrete 2" AC Bond Breaker Resealed Joint w/SS-S164 8" Reinforced PCC 12" Crusher run base (CBR 90) 4" Pea gravel w/perforated 4" drains @ 40' center to center	1946 1946 1946	1995 1986 1986 1964
Taxiway C	T22C	TWC-01 TWC-02	<u>TAXIWAY CHARLIE</u> 12" Portland Cement Concrete 18" Crusher run base (CBR 90) 4" Pea gravel w/perforated 4" drains @ 40' center to center	1946 1946 1946	
Taxiway C	T23C	TWC-1A	<u>TAXIWAY CHARLIE, EAST SECTION</u> Surface Seal/1"-2" AC overlay 12" Portland Cement Concrete 18" Crusher run base (CBR 90) 4" Pea gravel w/perforated 4" drains @ 40' center to center	1946 1946 1946	1995

Construction History

Branch ID	Section ID 2012	Section ID 2002	Section From Surface to Subgrade	Date Constructed	Date Repaired
Taxiway D	T28A T26A	EPTW-03 TWD-01 TWD-02	<u>TAXIWAY DELTA, SECTION</u> 11" Portland Cement Concrete 16" Base (CBR 60)	1952 1952	
West Ramp	A20B	WRP-03	<u>SOUTHWEST PARKING APRON</u> Resealed Joints (SS-S167 as needed) 11" Reinforced PCC 16" Base (CBR 60)	1952 1952	1966
West Ramp	A21B	WRP-02	<u>SOUTHWEST PARKING APRON</u> 11" Portland Cement Concrete Resealed Joints (SS-S167 as needed) 8" Reinforced PCC 12" Crusher run base (CBR 90) 4" Pea gravel w/perforated 4" drains @ 40' center to center	1946 1946 1946	1990 1966
West Ramp	A22B	WRP-04	<u>SOUTHWEST PARKING APRON</u> 11" Portland Cement Concrete 6" Cement Treated Base 6" Lime Subbase		1975 1975 1975